

# Technical Data Sheet

## INJEKTORKING VARIO

Injector fill gun suited for EPS/EPP/EPE/ARCEL/NEOPOR



Brand name:	
Injektorking Vario EPS	Suited for regular EPS.
Injektorking Vario POWER	Suited for high density EPS, Arcel, Neopor (Graphite)
Injektorking Vario Turbo/Combi	Suited for EPS, EPP, EPE, Arcel, Neopor (Graphite).

Material Stainless Steel, Brass, Aluminium

### Available standard specifications:

Barrel length (AAA)	230, 330, 430, 530, 630, 730 mm
Barrel diameter (BB)	40, 42, 42x1,5, 50 mm
Tip OD (CC)	14 - 36 mm
Piston plunger (DD)	12, 16, 18, 20 mm
Tip length (LL)	20 - 75 mm
Total length	490 - 890 mm
Ejector (FFF), optional	100 mm

Material in-let thread 1"

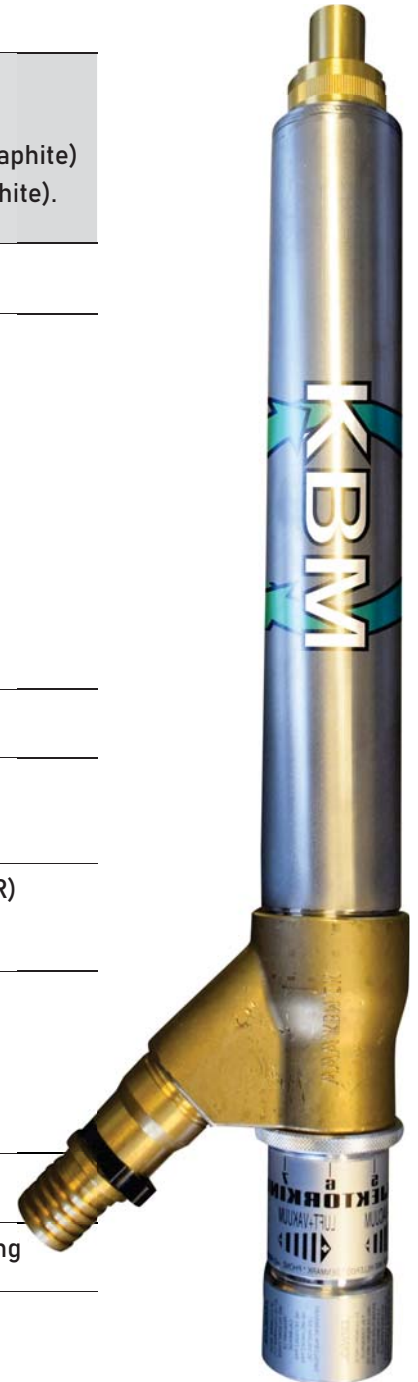
Seals:: 1 x U-seal + 1 x Double-lip seal  
*See accessories list for detailed description*

Air connections: 1 x Open & filling air 1/4" (3/8" for T/C & POWER)  
1 x Closing air 1/4"

Air consumption KBM VARIO system.  
(All VARIOKING injectors are calibrated at 6 bar pressure)  
VARIO EPS: 60 - 180 l/min  
VARIO POWER: 100 - 260 l/min  
VARIO TURBO/COMBI: 100 - 260 l/min

Blow-back function Yes

3C air connection Optional - 3 connections for open, close & filling



KBM APS | VOELUNDSVEJ 13 | 3400 HILLEROED | DENMARK

Phone +45 4826 8090 / [www.kbm.dk](http://www.kbm.dk) / [kbm@kbm.dk](mailto:kbm@kbm.dk)

KBM ApS guarantees that the product meets the specification above. The keeping, handling and use of the products are beyond the control of KBM ApS, and therefore shall not invoke any responsibility of the company. This TD substitutes and deletes all previous versions.



# Technical Data Sheet

# INJEKTORKING VARIO

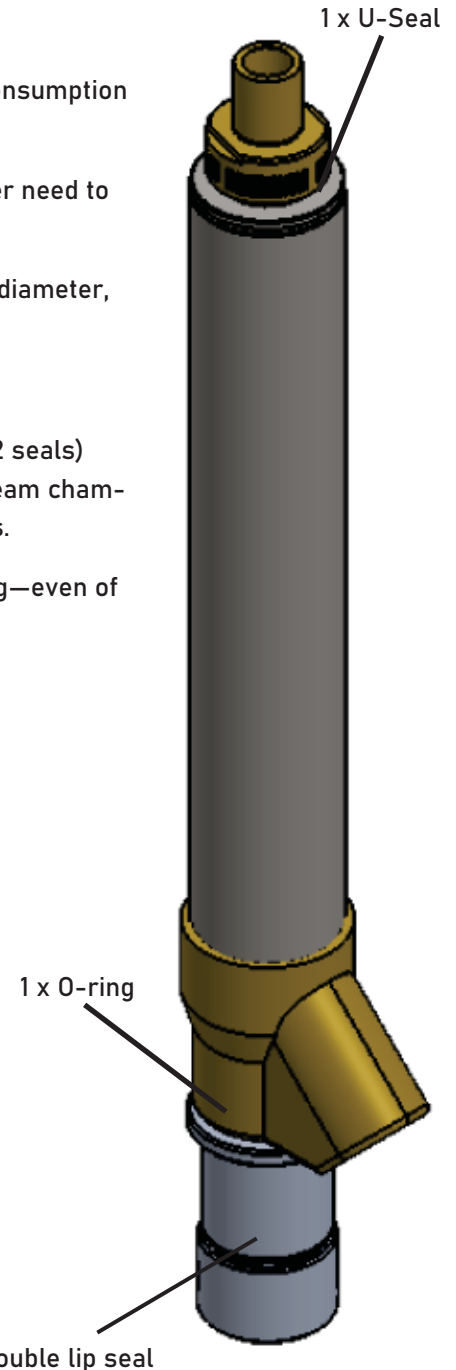
Injector fill gun suited for EPS/EPP/EPE/ARCEL/NEOPOR



## INJEKTORKING KEY BENEFITS

- **MINIMAL AIR CONSUMPTION:** By maximum setting on KBM injectors, air consumption is less than half of most other major suppliers of injectors.
- **STEPLESS VARIABLE ADJUSTMENT** of the air volume, means you will never need to introduce more air than needed to fill the mould.
- **FAST MAINTANENCE:** It takes just 30 seconds to change the tip to another diameter, and tips are available in all sizes ranging from 18-36 mm.
- **Build-in "Blow-back on time"** after closed function.
- **Simple design and extremely low maintenance:** To change all wear parts (2 seals) takes 3 minutes. To change the U-seal, which is the only seal inside the steam chamber takes 15 seconds. All parts are dismantled by hand without use of tools.
- **Designed also for use with pressure filling systems,** allowing optimal filling—even of thin-walled sections too.

<b>INJEKTORKING VARIO EPS</b>	Very low energy fill injector with adjustable air/vacuum setting. Enables you to optimize your energy consumption, while still maintaining good filling. Perfect for all regular EPS moulding tasks.
<b>INJEKTORKING VARIO EPS POWER</b>	The fill injector for demanding tasks. Combine a low air consumption with a higher vacuum, ensuring a good filling of complex moulds and higher densities. Fills almost all materials.
<b>INJEKTORKING VARIO TURBO/COMBI</b>	The fill injector for all materials and densities. EPS, EPP, EPE, Arcel, Neopor etc. Same air/vacuum profile as the VARIO EPS Power ensures a very good and fast filling.





KBM APS | VOELUNDSVEJ 13 | 3400 HILLEROED | DENMARK  
 Phone +45 4826 8090 / [www.kbm.dk](http://www.kbm.dk) / [kbm@kbm.dk](mailto:kbm@kbm.dk)

KBM ApS guarantees that the product meets the specification above. The keeping, handling and use of the products are beyond the control of KBM ApS, and therefore shall not invoke any responsibility of the company. This TD substitutes and deletes all previous versions.



# Technical Data Sheet

# INJEKTORKING VARIO

Injector fill gun suited for EPS/EPP/EPE/ARCEL/NEOPOR



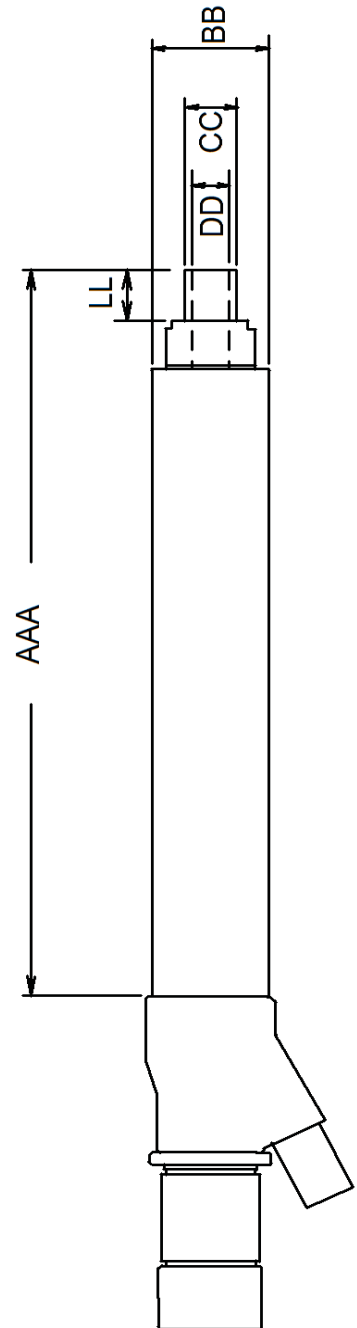
## EXAMPLES:

TYPE	AAA	BB	CC	DD	Total	FFF
330/40/18-36/16	330mm	40mm	18-36mm*	16mm	490mm	
330/40/18-36/16/100	330mm	40mm	18-36mm*	16mm	690mm	100mm**
530/40/18-36/16	530mm	40mm	18-36mm*	16mm	690mm	
530/40/18-36/16/100	530mm	40mm	18-36mm*	16mm	890mm	100mm**
330/42/18-36/16	330mm	42mm	18-36mm*	16mm	490mm	
330/42/18-36/16/100	330mm	42mm	18-36mm*	16mm	690mm	100mm**
530/42/18-36/16	530mm	42mm	18-36mm*	16mm	690mm	
530/42/18-36/16/100	530mm	42mm	18-36mm*	16mm	890mm	100mm**
430/42x1,5/18-36/16	430mm	42x1,5	18-36mm*	16mm	640mm	
430/42x1,5/18-36/16/100	430mm	42x1,5	18-36mm*	16mm	840mm	100mm**
230/50/18-36/16	230mm	50mm	18-36mm*	16mm	390mm	
330/50/18-36/16	330mm	50mm	18-36mm*	16mm	490mm	
330/50/18-36/16/100	330mm	50mm	18-36mm*	16mm	690mm	100mm**
430/50/18-36/16	430mm	50mm	18-36mm*	16mm	590mm	
530/50/18-36/16	530mm	50mm	18-36mm*	16mm	690mm	
530/50/18-36/16/100	530mm	50mm	18-36mm*	16mm	890mm	100mm**
330/50/20-36/18	330mm	50mm	20-36mm*	18mm	490mm	
330/50/22-36/20	330mm	50mm	22-36mm*	20mm	490mm	

\* Exchangeable tip - It takes 30 seconds to change size.

\*\* Built-in Ejector movement.

DD (Plunger piston) available in: 12,16,18, 20 mm

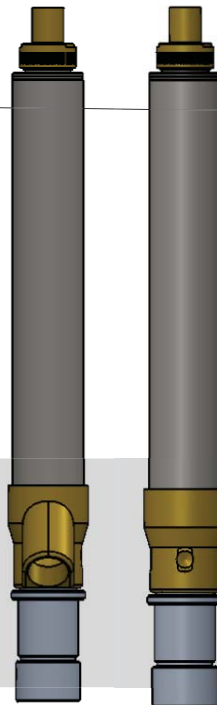


Standard tip length mm

Custom sizes also available



KBM supplies a complete range of connectors, clamp rings and seals with short lead times. See the complete range in our accessories list.



KBM APS | VOELUNDSVEJ 13 | 3400 HILLEROED | DENMARK

Phone +45 4826 8090 / [www.kbm.dk](http://www.kbm.dk) / [kbm@kbm.dk](mailto:kbm@kbm.dk)

KBM ApS guarantees that the product meets the specification above. The keeping, handling and use of the products are beyond the control of KBM ApS, and therefore shall not invoke any responsibility of the company. This TD substitutes and deletes all previous versions.



# Technical Data Sheet

# INJEKTORKING VARIO

Injector fill gun suited for EPS/EPP/EPE/ARCEL/NEOPOR



## OVERVIEW

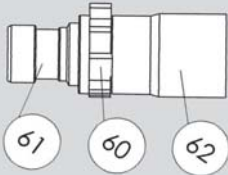
1. Piston plunger
2. U-seal
3. Outside barrel
4. Tip
5. Casing
6. Inside barrel
7. Piston shaft
8. Air cylinder pipe
9. Piston
10. Air cylinder cap
11. Counter nut
13. Air orifice
14. Nut
15. Self-locking nut
16. O-ring
17. Double lip seal

## Ejector parts:

20. Spring
21. Spring base
22. Spring nut
23. Piston plunger ejector
24. Set screw
25. Cylinder connector
26. Air cylinder pipe

## Quick clamp (Combi):

60. Clip
61. Hose stub
62. Connecting piece



## VARIO SYSTEM: STEPLESS AIR CONTROL

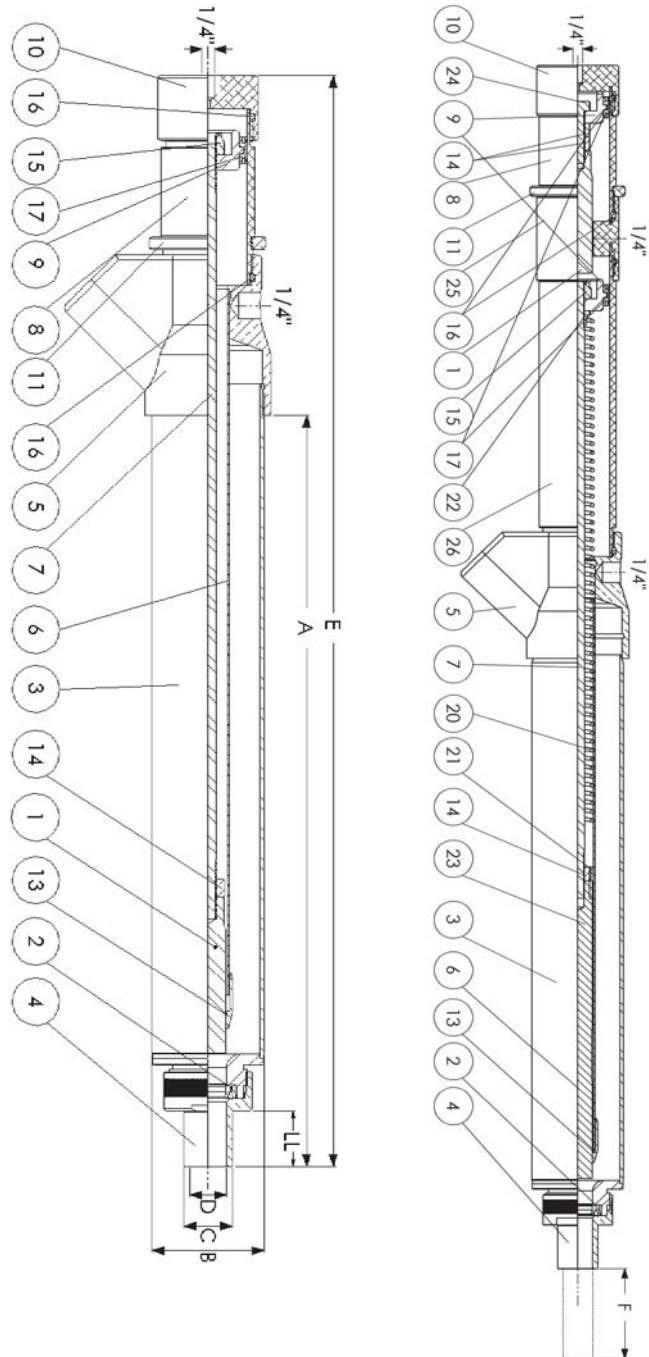
is calibrated for a minimum of 60 l/min air consumption at 6 bar. This is equal to 159 Nominal l/min.

$$(NI/Min = \sqrt{\text{Bar} + 1} \times \text{air volume})$$

Example: 60 l at 6 bar:  $\sqrt{6 + 1} \times 60 = 159 \text{ NI/Min}$

One position adjustment on the scale is equal to approx. 15 l/min.

The Power and TURBO/COMBI versions are calibrated for a minimum of 100 l/min air consumption at 6 bar and a max. air consumption of 260 l/min.



INJEKTORKING VARIO EPS WITH EJECTOR - ALSO AS TURBO/COMBI (EPS, EPP, EPE, ARCEL and NEOPOR) TYPES.



KBM APS | VOELUNDSVEJ 13 | 3400 HILLEROED | DENMARK

Phone +45 4826 8090 / www.kbm.dk / kbm@kbm.dk

KBM ApS guarantees that the product meets the specification above. The keeping, handling and use of the products are beyond the control of KBM ApS, and therefore shall not invoke any responsibility of the company. This TD substitutes and deletes all previous versions.

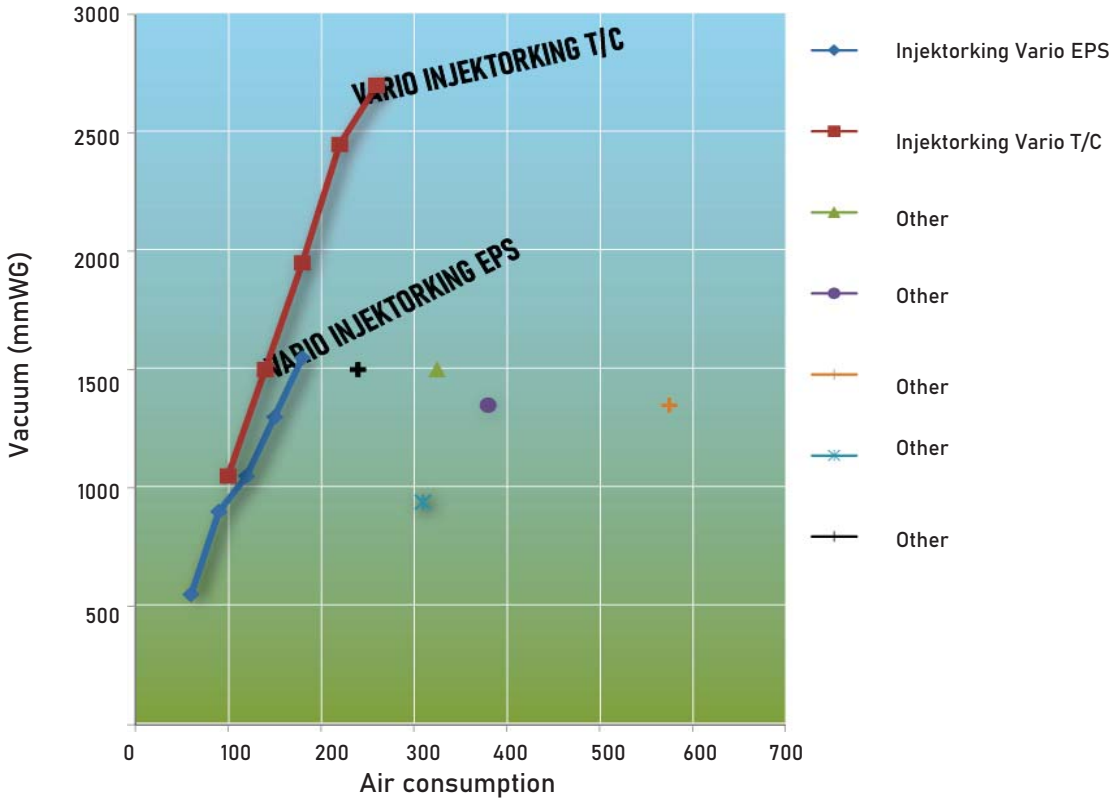


# Technical Data Sheet

## INJEKTORKING VARIO



Air consumption by 6 Bar



Nominal air consumption (pressure unrelated) = Consumption \* sqrt(Bar+1)

